



955 Benton Ave., Winslow, ME 04901 • Phone: 1-877-564-6697 • Fax: 1-800-738-6314  
Email: service@johnnyseeds.com • Web Site: Johnnyseeds.com

The Bender Hitch Mount is designed to fit into 2-inch tow-bar receivers, which are the most common. Adapters for smaller receivers can be purchased at local retailers. It doubles as the surface for bending your hoops and allows for easily transporting your materials in the bed of your vehicle to your construction site. The Bender Hitch Mount is compatible with 4- and 6-foot Quick Hoops Low Tunnel Benders. For use with galvanized electrical conduit (EMT) only.

**Materials Included:**

- Hinged support arm assembly
- Wire-lock clevis pin
- Aluminum mounting plate
- (4) 1" x 5/16"-18 screws, hex nuts, and washers

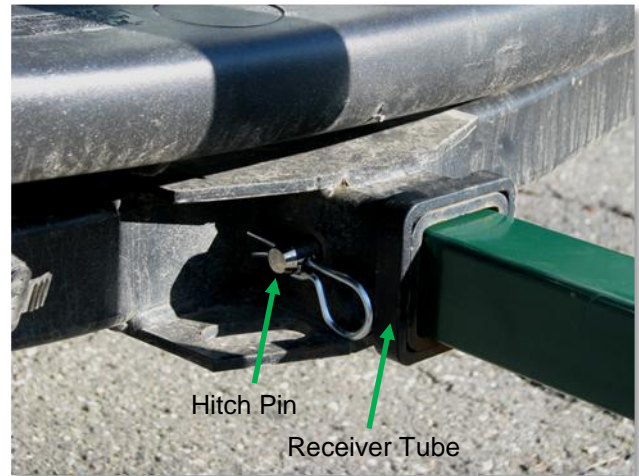
**Additional Materials:**

- (2) 1/2" wrenches
- 7/16" wrench
- Standard hitch pin
- 2" tow bar receiver on a vehicle

**ASSEMBLY INSTRUCTIONS:**

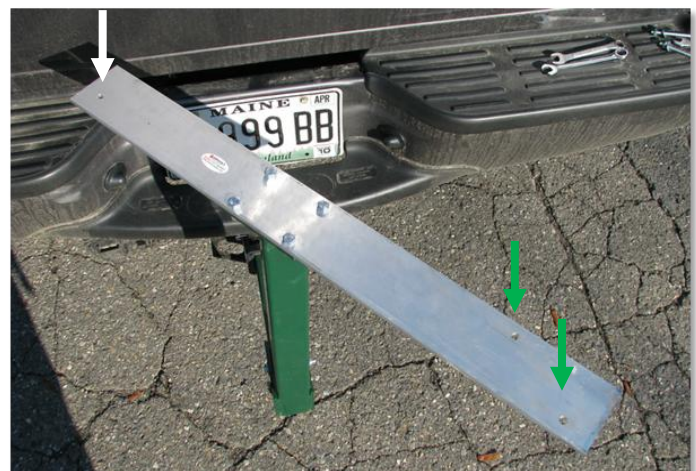


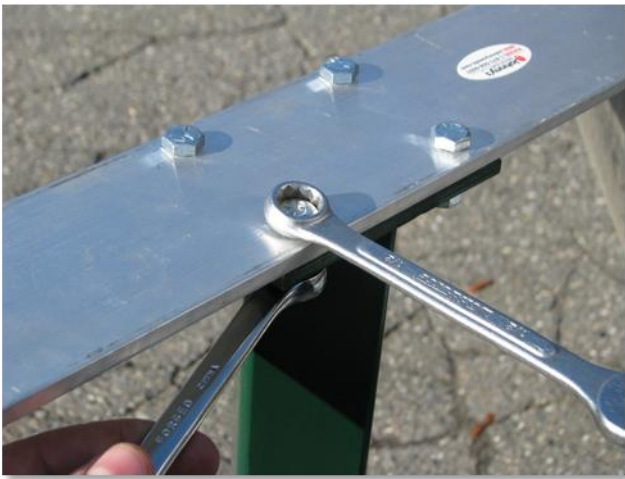
**STEP 1:** Remove wire-lock clevis pin from green hinged portion of mount, rotate support arms so they are at right-angles to each other, and secure with wire-lock clevis pin.



**STEP 2:** Slide the end with the large predrilled hole into the receiver tube on your vehicle. Secure with any standard hitch pin or large bolt.

**STEP 3:** Place the aluminum mounting plate on top of the hitch mount with the single screw hole end (indicated by the white arrow) closest to the vehicle.





**STEP 4:** Using the two ½” wrenches, secure the mounting plate with the 4 screws, washers, and hex nuts provided as shown above.



**STEP 5:** Use the single hole nearest the vehicle for either bender; and one of the other holes on the opposite end depending on which bender you have.



**STEP 6:** Using a 7/16” wrench, secure either 4- or 6-foot Quick Hoops Bender using the two ¼” x 4-½” carriage bolts, nuts, and washers.



**Note:** All washers should be located on the bottom above the hex nuts as shown above.

