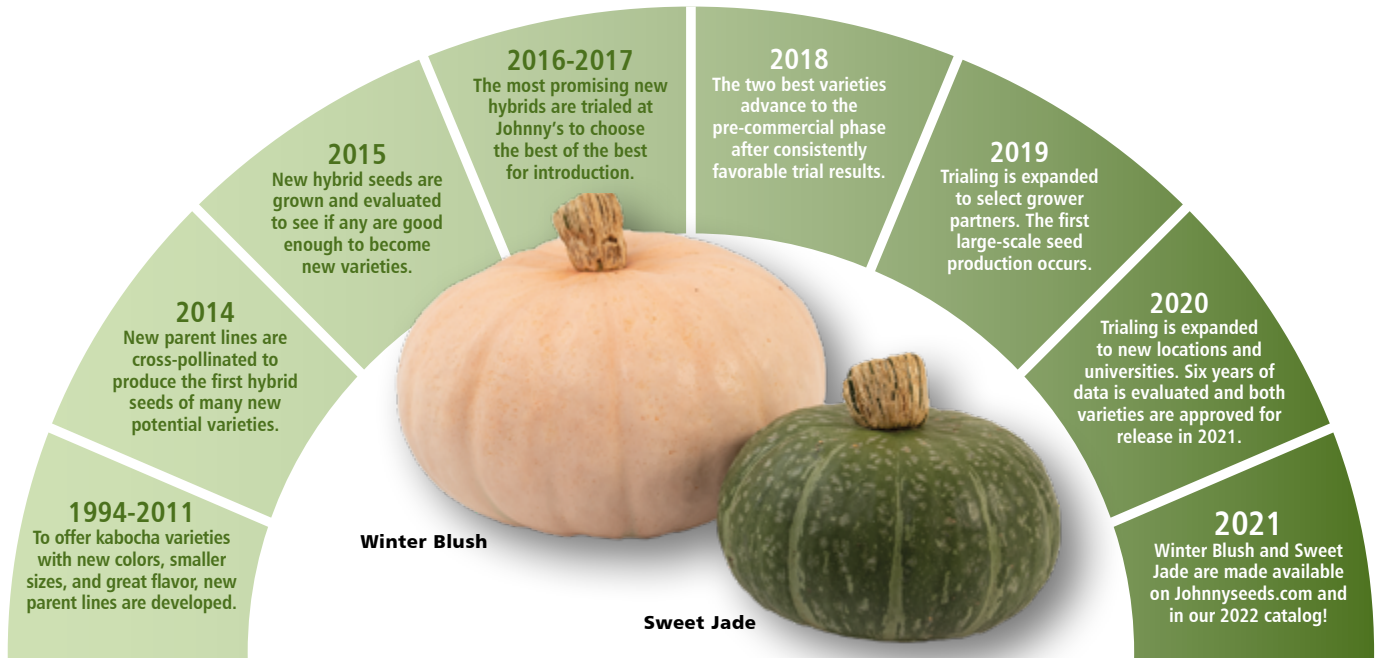


## Johnny's-Bred Kabochas — The Journey of Winter Blush and Sweet Jade

Breeding and selection for the improvement of crop traits have been practiced since the earliest days of agriculture. The Johnny's breeding team uses classical plant breeding practices to create new and improved varieties specifically suited to the needs of mixed market growers and avid home gardeners. Each Johnny's-bred variety is the result of many years of focused research and trialing.

**Parent Lines:** Genetically uniform parent seeds with particular desired qualities that are cross-bred to create a hybrid variety.

**F1 Hybrid:** First-generation offspring from genetically stable parent lines created by plant breeders with improved traits like color or disease resistance.



For more information about Johnny's plant breeding program, visit [Johnnyseeds.com/research-farm](http://Johnnyseeds.com/research-farm)



**Winter Blush (F1)**

*A welcome splash of color at markets.*



**Sweet Jade (F1)**

*Delicious personal-size kabocha.*