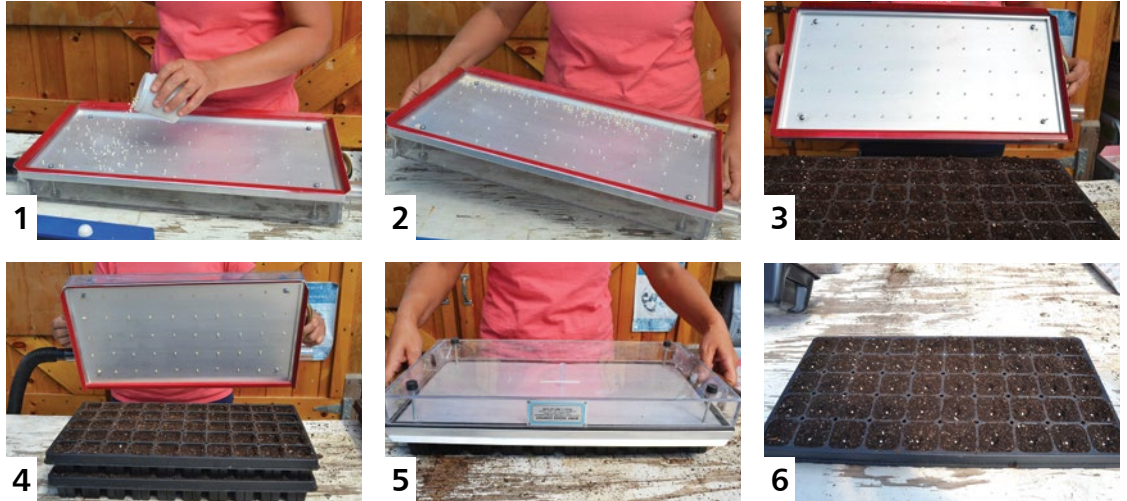


PRECISION VACUUM SEEDER PLATE COMPARISON CHART

Precision Vacuum Seeder 7335
Accurately seed an entire tray at once. Designed for use with a variety of standard 1020 trays. Includes seeder body, seed collection tray and stand, small Shop Vac, orifice cleaner, and inspection light for identifying clogged holes. Made in the USA. Please allow up to 4 weeks for delivery. NOTE: Seed plates are required for use and sold separately. See below for details and recommendations.



MORE ONLINE

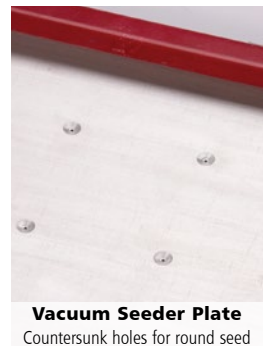
Find Precision Vacuum Seeder trial crop recommendations and instruction manual at Johnnyseeds.com

Vacuum Seeder Plates

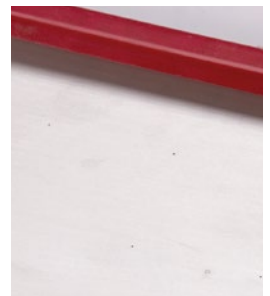
Precision-machined aluminum plates that fit perfectly onto the Vacuum Seeder body. Custom-made to order to fit your specific needs. Choose a plate with the same number of holes as cells in your seedling tray. Please specify your tray manufacturer when ordering. Allow up to 4 weeks for delivery.

Plate Type	Hole Size	Hole Type	# of Holes						Recommended Crops
			288	200	128	72	50	36	
Size A	Large	CS	#7181	#7182	#7183	#7184	#7185	#7186	Broccoli, Brussels Sprouts, Cabbage, Cauliflower, Celosia, Beets, Sweet Peas (Flower), Phlox, Cilantro, Saponaria, Euphorbia, Sage, Large Pelleted Seed (Size 13 and Larger)
Size B	Medium	P	#7187	#7193	#7194	#7195	#7196	#7197	Peppers, Tomatoes, Eggplant, Onion (Raw), Leeks, Basil, Calendula, Delphinium, Larkspur, Centaurea, Agrostemma, Gomphrena, Scabiosa, Cynoglossum, Radish, Rosemary
Size C	Small	P	#7198	#7199	#7200	#7201	#7202	#7203	Lettuce (Raw), Chicory, Dianthus, Stock, Strawflower, Marigold, Viola, Rudbeckia, Nigella, Parsley, Bupleurum, Dianthus, Dusty Miller (Pelleted), Eucalyptus, Salvia, Chives, Mache, Dill, Celery, Zinnia
Size D	Medium	CS	#7204	#7205	#7206	#7207	#7208	#7209	Cabbage, Kale, Kohlrabi, Pac Choi, Shiso, Smaller Pelleted Seed
Size E	Large	P	#7210	#7188	#7189	#7190	#7191	#7192	Artichoke, Cucumber, Melon, Swiss Chard, Spinach, Sunflowers, Cerinthe, Larger Pelleted Seed
Size F	Small	CS	#7687	#7688	#7689	#7129	#7131	#7132	Ageratum, Digitalis (Pelleted), Lisianthus (Pelleted), Snapdragon, Holy Basil, Catnip, Marjoram, Feverfew, Verbena, Thyme
Size G	X-Small	CS	#7133	#7505	#7692	#7693	#7694	#7695	Feverfew (Raw), Lisianthus (Raw), Chamomile, Mint, Oregano, Sweet Annie, Yarrow

CS=Countersunk Holes (for round seed). P=Plain Holes (for oblong and abnormally shaped seed).



Vacuum Seeder Plate
Countersunk holes for round seed



Vacuum Seeder Plate
Plain holes for oblong & abnormal seed

Also Available

Precision Vacuum Seeder for Paperpots 7063

Same great seeder as the original, but sized for 264-cell paperpot trays for use with the Paperpot System.

Vacuum Seeder Plates for Paperpots

# Holes	Size A	Size B	Size C	Size D	Size E	Size F	Size G
264	#7657	#7658	#7659	#7660	#7661	#7690	#7691

More seeder plates for Paperpot Trays available online.



Precision Vacuum Seeder for Paperpots