

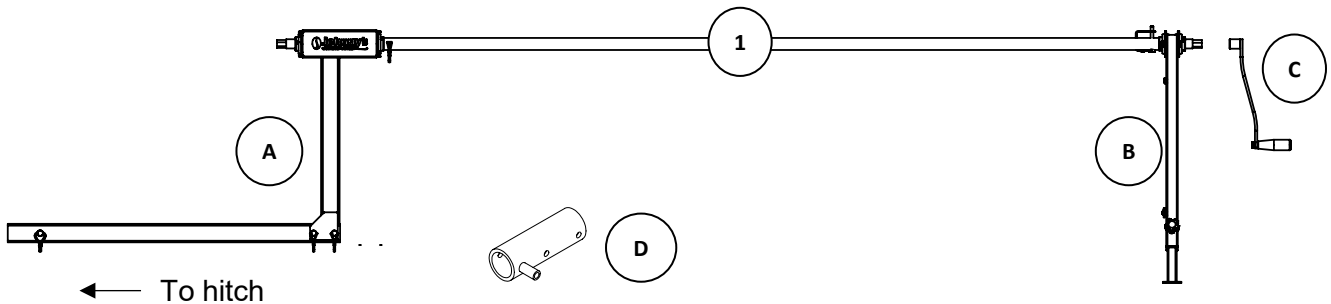
955 Benton Ave., Winslow, ME 04901 • Phone: 1-877-564-6697 • Fax: 1-800-738-6314  
Email: [service@johnnyseeds.com](mailto:service@johnnyseeds.com) • Website: [Johnnyseeds.com](http://Johnnyseeds.com)

### COMPONENTS INCLUDED:

- A. Main Spindle (*mounts to hitch*)
- B. Tail Spindle Stand (*stands on ground*)
- C. Handle
- D. Drill fixture

### TOOLS & PARTS NEEDED:

1. Chain Link Fence Top Rail (1 3/8" Diameter)\*
2. Hack saw or reciprocating saw
3. Johnny's Snap Clamps (Product ID #7035)
4. Standard 2" Trailer Hitch
5. Drill
6. 5/16" drill bit



\*Chain Link Fence Top Rail (referred to as Top Rail in these instructions) is available at home centers or local fence companies. The Top Rail will serve as the core of your rolled up ag fabric. It will need to be cut to the desired length (at least 12 inches longer than the width of the ag fabric) and drilled at both ends to secure to the spindle for turning. See next page for further instructions on Top Rail preparation.

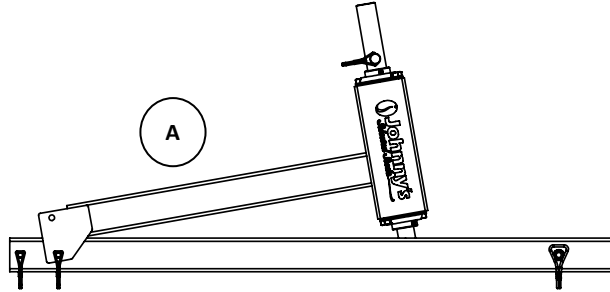
**TABLE 1. COMPATIBLE FABRICS AND LENGTHS**

Sunbelt Black Ground Cover (3.2oz)	All lengths up to 500'
Pro5 Weed Barrier (5oz)	All lengths up to 250'
Black Weed Fabric (1.5oz)	All lengths up to 500'
Johnny's DuraSpun®	All weights and lengths
Agribon+ Row Covers	All weights and lengths

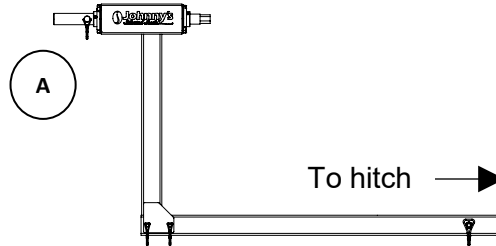
## SET UP INSTRUCTIONS:

1) The Main Spindle (A) ships and stores folded (Fig. 1). To unfold, remove the pin nearest to the end of the swivel joint side, rotate the spindle head up to vertical, and reinstall the pin (Fig. 2). Install the other end of the Main Spindle (A) into a 2-inch square trailer hitch receiver and pin it in place.

**Fig. 1**



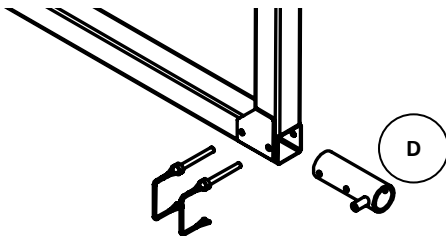
**Fig. 2**



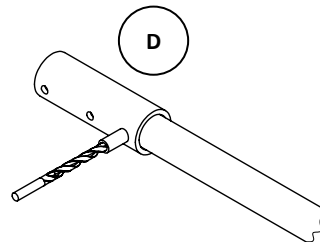
2) Insert the Drill Fixture (D) into the Main Spindle (A) as shown below (Fig. 3).

3) Prepare Top Rail(s): You will need one Top Rail (1 3/8" diameter) for each roll of fabric you wish to wind. Use a standard hack saw or reciprocating saw to cut the Top Rail to the desired length (at least 12" longer than the width of the fabric you will be rolling). Then, insert the Top Rail (1) into the Fixture (D) until it hits the pin. Insert 5/16" drill bit into the guide in the fixture and drill through both walls of the top rail at both ends (Fig. 4). Alternatively, put the Top Rail (1) into a table vice instead of using the Fixture (D); then drill the holes 1 1/2" from each end.

**Fig. 3**

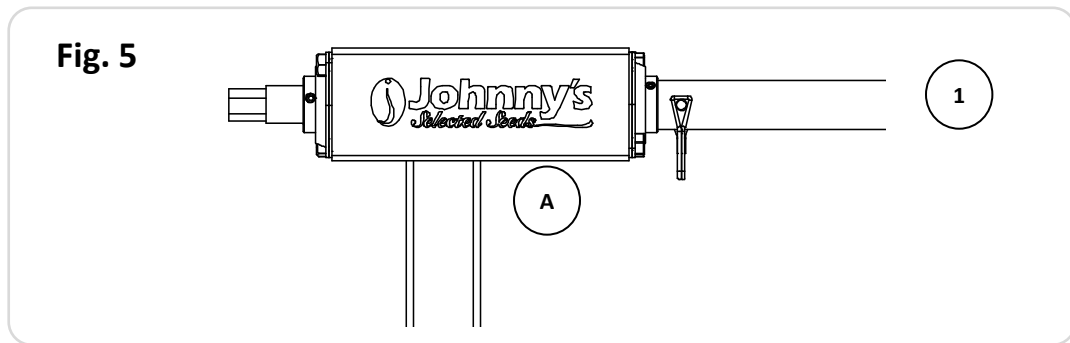


**Fig. 4**

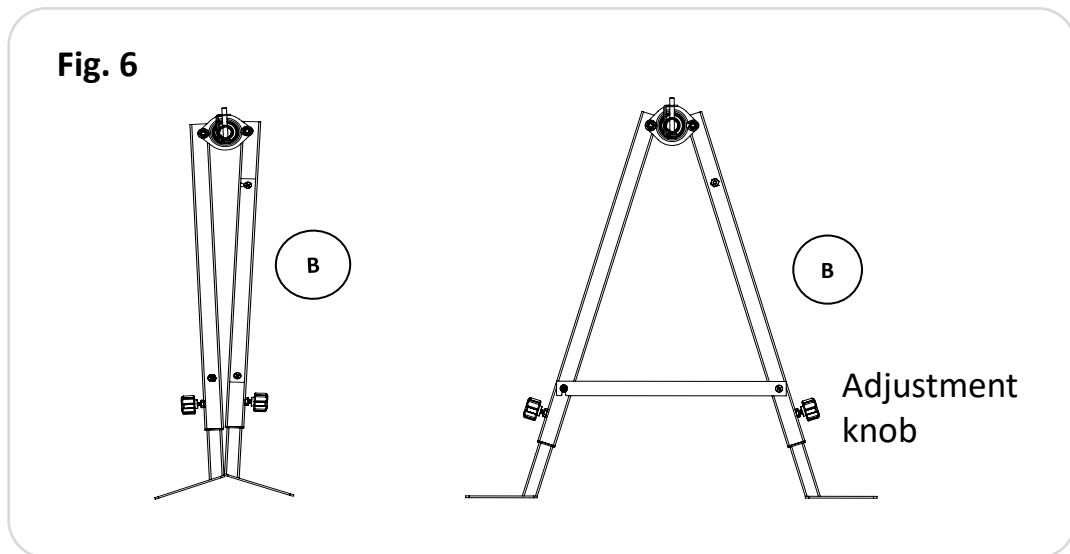


## SET UP INSTRUCTIONS:

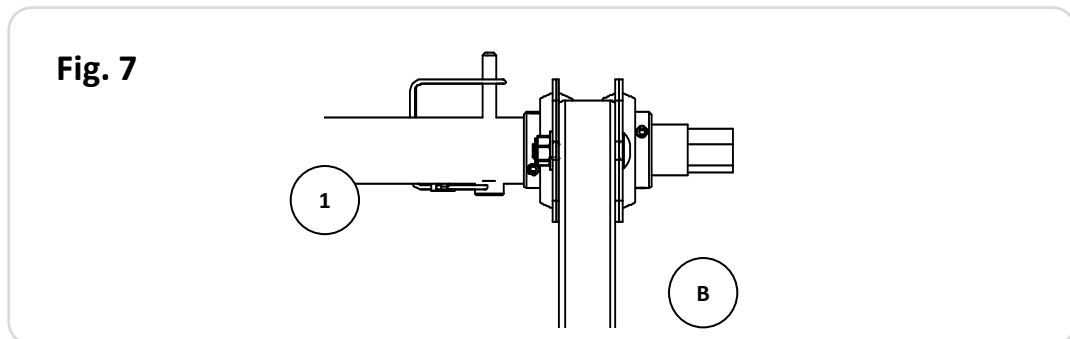
- 4) Install Top Rail (1) onto Main Spindle (A) and pin it in place.



- 5) The Tail Spindle Stand (B) ships and stores folded. Unfold it and secure the crossbar (Fig. 6). Adjust the height using the knobs on each leg.



- 6) Install the Top Rail (1) onto the Tail Spindle (B) and pin it in place (Fig. 7).



## OPERATING INSTRUCTIONS:

**NOTE:** Before attempting to operate: It is recommended that at least two people operate the Johnny's Winder.

- 7) Prepare your fabric for winding: it is important to remove all staples, pins or other anchors from the material. For wider materials, folding it in half lengthwise may be necessary. Pull the far end of the folded material toward the Johnny's Winder. An example of 10' wide material folded in is half shown below (Fig. 8).

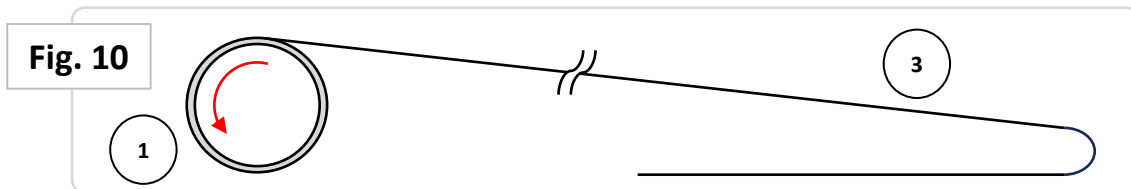


Row cover is drawn from the far end of the row and folded over on itself to reduce friction as the fabric is being wound.

- 7) Clip the end of the Fabric (3) onto the Top Rail (1) using Snap Clamps (2) (Fig. 9).
- 8) Using the Handle (C), roll the Fabric (3) onto the Top Rail (1). The fabric can be wound either direction, but the roll will be tighter if the fabric goes over the top first (Fig. 10).



**Fig. 9**



### TIPS FOR OPERATION:

- Standing on the bottom feet of the Tail Spindle (B) while winding helps stabilize the system. The feet also have holes for staking them down if that is preferred; this may be necessary if you are winding from the Main Spindle (A) end (near the trailer hitch).
- Ensure that the Top Rail (1) is oriented evenly perpendicular to the run of fabric you are winding. This is the best way to prevent the fabric from bunching at one end of the top rail. If the fabric is bunching at the main spindle end (nearest the hitch), move the Tail Spindle Stand (B) toward the run of fabric, and if it is bunching at the tail spindle end, move it away from the run.

### WINDING WITH A DRILL:

- The Johnny's Winder is designed specifically for winding woven weed barriers and spun fabrics with the Handle (C), included. It does have the ability to be used with a standard 18-20 V drill and a  $\frac{3}{4}$ " socket, attaching the socket in place of the Handle (C). The drill should be set to the highest torque and the lowest speed setting.
- A drill is a good option for winding up lengths of floating row cover or drip tape. **We do not recommend using a drill to wind ground cover due to the extreme load that the fabric and debris can put on your drill.**